

Amended Supplement No. 1 to Offering Circular Dated January 13, 2021



ORACLE HEALTH, INC.
910 Woodbridge Court
Safety Harbor, FL 34695
(727) 470-3466; www.Oracle-Health.com

This Amended Offering Circular Supplement No. 1 (the “**Amended Supplement**”) relates to the Offering Circular of Oracle Health, Inc. (the “**Company**”), dated January 13, 2021 (the “**Offering Circular**”), relating to the Company’s public offering under Regulation A of Section 3(6) of the Securities Act of 1933, as amended, for Tier 2 offerings, pursuant to which the Company is offering up to up to 4,000,000 shares of common stock at an offering price of \$2.00 per share for aggregate maximum gross proceeds of \$8,000,000.

This Amended Supplement should be read in conjunction with the Offering Circular and the Offering Circular Supplement No.1 filed with Securities and Exchange Commission (the “**SEC**”) on March 10, 2021 (the “**Supplement**”), and is qualified by reference to the Offering Circular and the Supplement except to the extent that the information contained herein supplements or supersedes the information contained in the Offering Circular and the Supplement, and may not be delivered without the Offering Circular and the Supplement.

The purpose of this Amended Supplement is to include the investor presentation on Form 1-U filed with the SEC on March 10, 2021. The exhibits to such reports are not included with this Supplement and are not incorporated by reference herein.

INVESTING IN OUR SECURITIES INVOLVES A HIGH DEGREE OF RISK. YOU SHOULD CAREFULLY READ AND CONSIDER THE “RISK FACTORS” BEGINNING ON PAGE 7 OF THE OFFERING CIRCULAR.

Neither the Securities and Exchange Commission nor any state securities commission has approved or disapproved of these securities or determined if this Offering Circular is truthful or complete. Any representation to the contrary is a criminal offense.

The date of this Amended Supplement No. 1 to Offering Circular is March 12, 2021

UNITED STATES
SECURITIES AND EXCHANGE COMMISSION
Washington, D.C. 20549

FORM 1-U

Current Report Pursuant to Regulation A

Date of Report (Date of earliest event reported): March 10, 2021 (March 9, 2021)

ORACLE HEALTH, INC.

(Exact name of issuer as specified in its charter)

Delaware

(State or other jurisdiction of
incorporation or organization)

84-1730527

(I.R.S. Employer
Identification No.)

910 Woodbridge Court, Safety Harbor, FL 34695

(Full mailing address of principal executive offices)

727-470-3466

(Issuer's telephone number, including area code)

Title of each class of securities issued pursuant to Regulation A: Common Stock

This Current Report on Form 1-U is issued in accordance with Rule 257(b)(4) of Regulation A, and is neither an offer to sell any securities, nor a solicitation of an offer to buy, nor shall there be any sale of any such securities in any state or jurisdiction in which such offer, solicitation or sale would be unlawful prior to registration or qualification under the securities laws of any such state or jurisdiction.

ITEM 9. Other Events

Oracle Health, Inc. (the “Company”) has prepared the investor presentation attached as Exhibit 99.1 to this Current Report on Form 1-U (the “Investor Presentation”), which the Company’s management intends to use from time to time in meetings with investors, analysts, lenders, business partners, acquisition candidates, and others with an interest in the Company and its business, in connection with its current Regulation A qualified offering of its common stock.

The information contained in the Investor Presentation is summary information that should be considered in the context of the Company’s filings with the Securities and Exchange Commission and other public announcements the Company may make by press release or otherwise from time to time. The Investor Presentation speaks as of the date of this Report. While the Company may elect to update the Investor Presentation in the future to reflect events and circumstances occurring or existing after the date of this Report, the Company does not have, and expressly disclaims, any obligation to do so.

EXHIBIT INDEX

<u>Exhibit No.</u>	<u>Description</u>
99.1	Oracle Health Inc. Investor Presentation

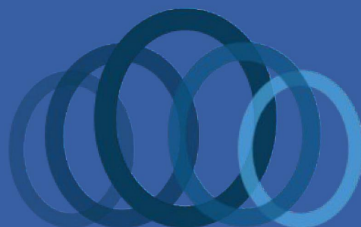
SIGNATURES

Pursuant to the requirements of Regulation A, the issuer has duly caused this report to be signed on its behalf by the undersigned, thereunto duly authorized.

March 10, 2021

ORACLE HEALTH, INC.

By: /s/ Jaeson Bang
Jaeson Bang
Chief Executive Officer



ORACLE HEALTH

Heart Failure Monitoring System

Voice of the Heart™

TEAM



Jae Bang
Founder & CEO

- Clinical, Technology and Business operations x 18 years with Medtronic and Heart Failure startups



Dr. Dan Burkhoff MD PhD
CMO

- Part Time
- Former VP at Heartware - \$1.2B Exit to Medtronic
- World renowned Physician Scientist with expertise in Startup and Heart Failure



Jim Georgakopoulos PhD
CSO

- Former CSO at a Heart Failure startup and NASDAQ company
- Former Heart Failure startup founder
- 30 Years in Heart Failure and cardiac hemodynamics



Randy Armstrong
CTO

- Former Technology Fellow at Cameron Health – \$1.3B Exit to Boston Sci
- 30 Years in Implantable Cardiac devices development



ADVISORS



Prof. Frits Prinzen PhD
Cardiac Hemodynamics &
Heart Failure Expert



Anatoly Yakovlev PhD
Machine Learning



Dr. Kevin Heist MD. PhD
Associate Professor
Harvard



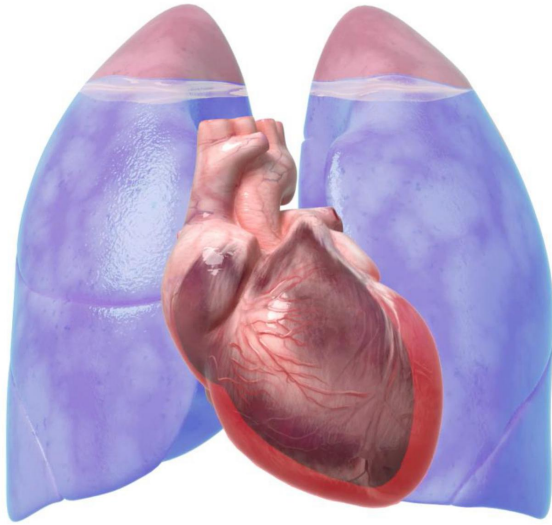
Dr. Toshi Okabe MD
Cardiac
Electrophysiologist



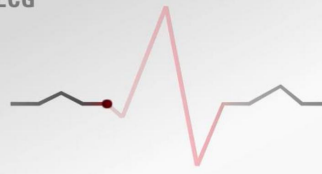
Dr. David Kraus MD
Heart Failure
Cardiologist



Heart Failure = Breathing Problem



ECG



Heart Sounds (PCG)

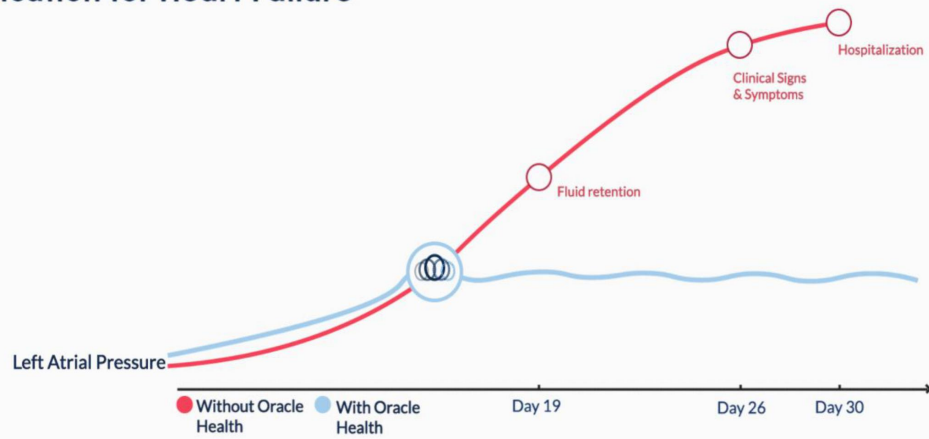


Activity

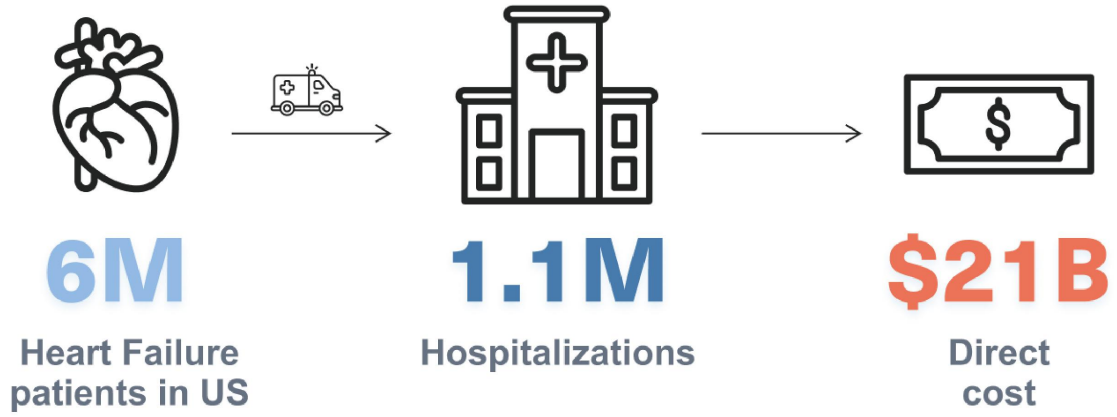


Atrial Pressure = Changes in Heart Sounds

Earliest and Most Specific Indication for Heart Failure



Heart Failure Problem



Problem: Wearables



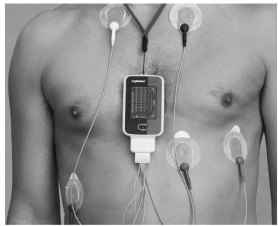
**Poor
Compliance**



**Low
Accuracy**



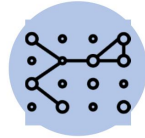
**Limited
Data**



Problem: Cath Lab Procedure



Expensive



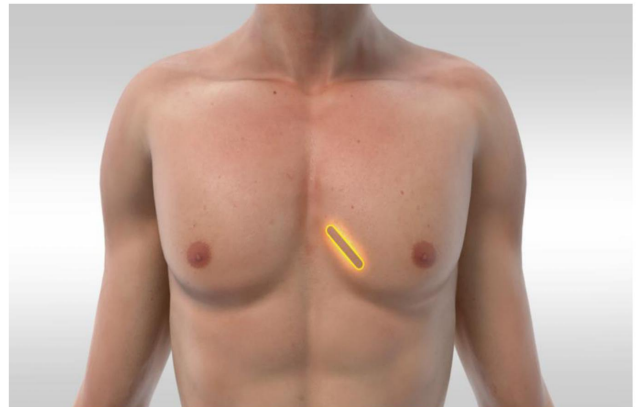
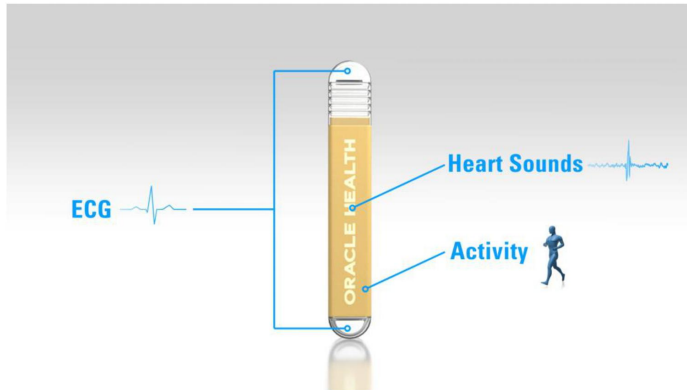
Complex



**Not for
Everyone**



Solution: Tiny Insertable Cardiac Monitor



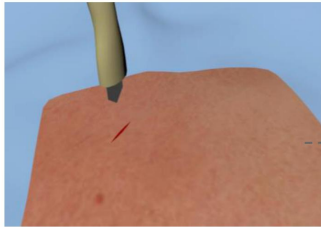
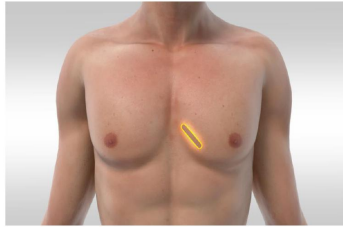
55 x 15 x 6 mm

**3 Year Battery
Longevity**

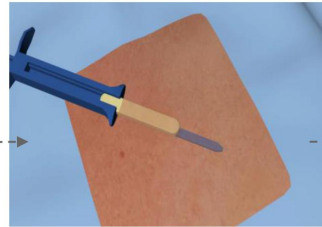
**2 min office
procedure**

No Follow Up

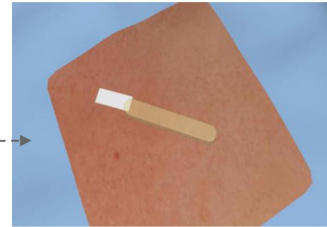
1. Simple Office Procedure



Physician **numbs** a small area
on the chest region.
And Makes a 1/4" incision



Inserts the device
under the skin.



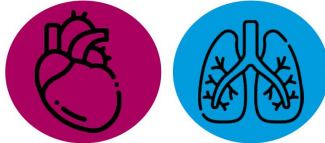
Covers with a
sterile bandage.

2. Multi-Sensor

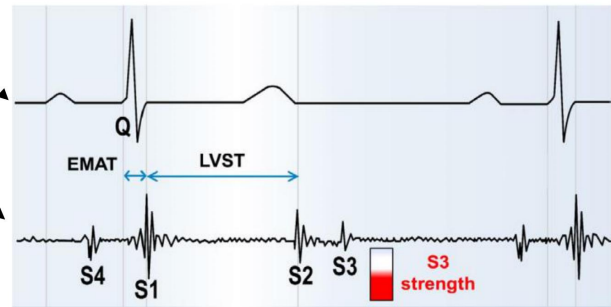
ECG



Acoustic
Sensor

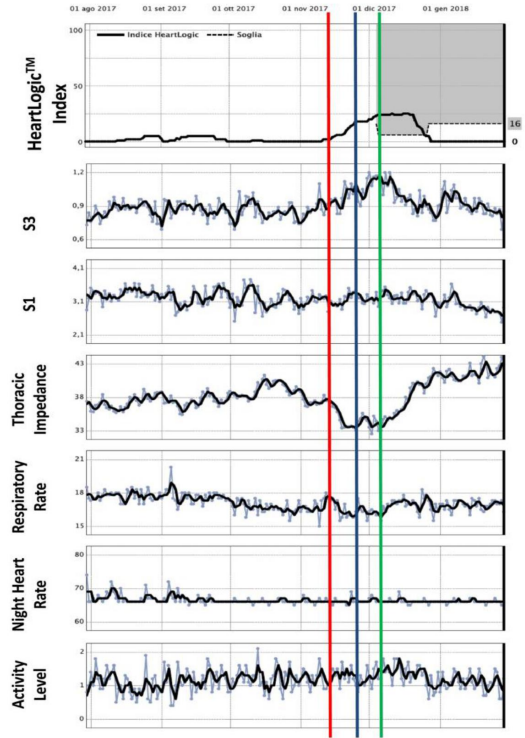
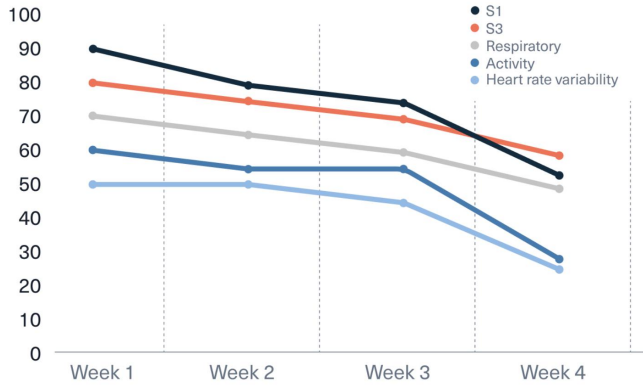


3 Axis
Accelerometer

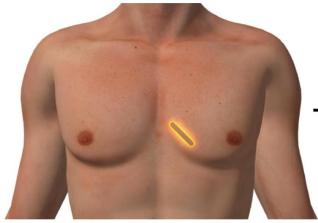


3. Data Driven Management

Trending cardiac data



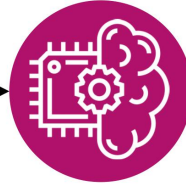
4. High Compliance



Zero maintenance for
3 years



Smartphone as a conduit for secured Data transfer



Comprehensive long-term trending analysis



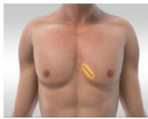
Access via secured web portal for **Data Driven management**

5. Short Regulatory process + Reimbursement



**Insurance
Coverage
\$7400**

Competitive Landscape



cardiomems®

VitalConnect®

SENSIBLE MEDICAL
Seeing through walls



Simple procedure



Accurate



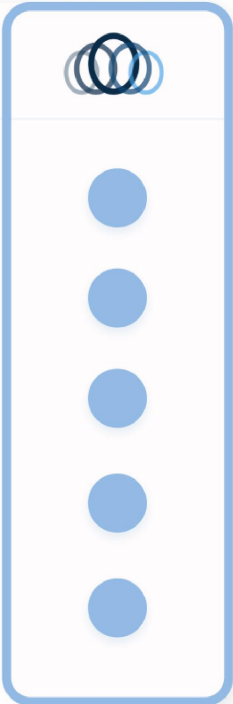
Compliance



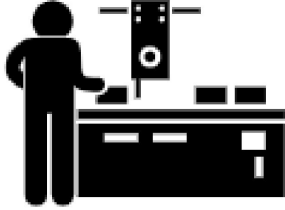
Reimbursement



Multi-Sensors



Pricing & Revenue Model



\$1000

**COG
per unit**



\$5300

**Sales price
per unit**



\$7400

**Insurance
Coverage per
procedure**

2 Year Sales Distribution Model



20

**Heart Failure
Cardiologists**



6

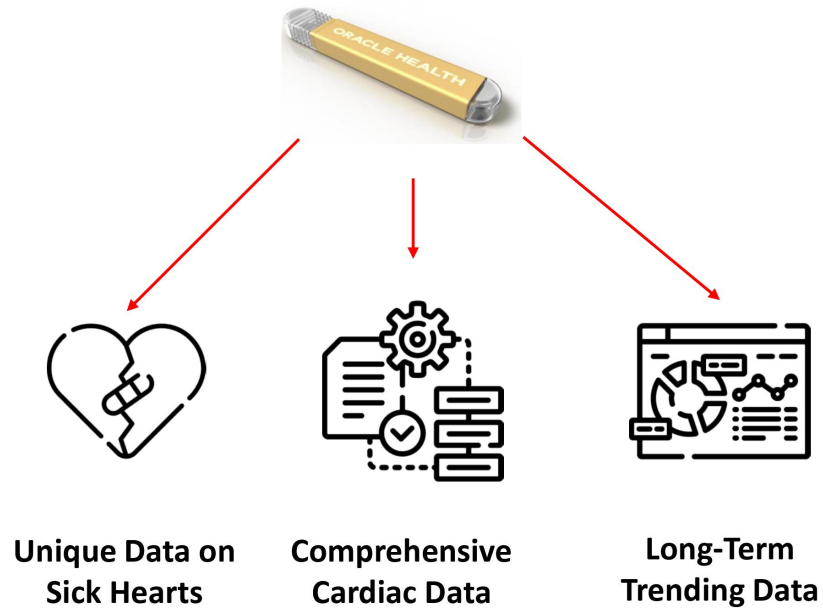
Hospitals



2

**Highest Volume
States**

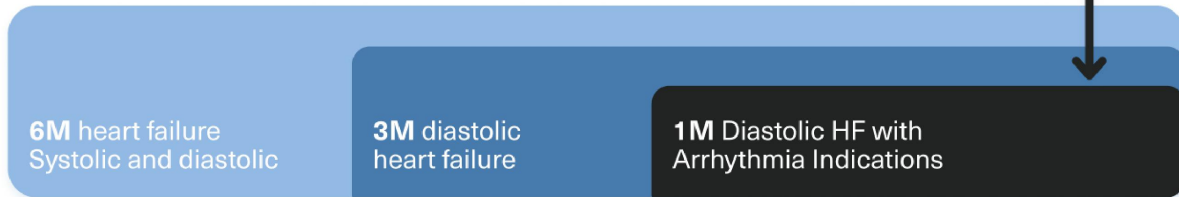
Device and Data Strategy



\$5.3 B TAM

\$5,300/unit x 1M heart patients

\$5.3 billion

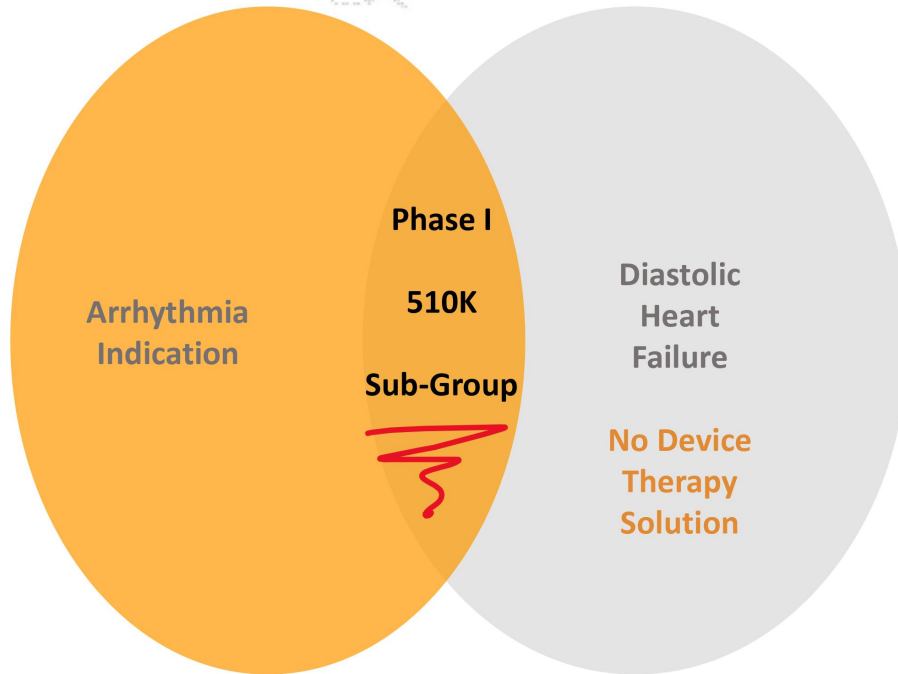


6M heart failure
Systolic and diastolic

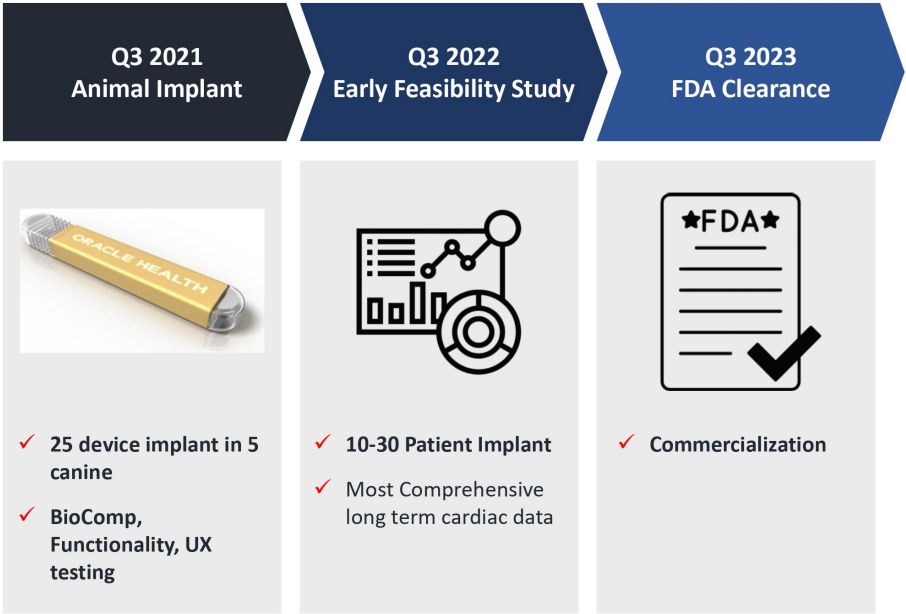
3M diastolic
heart failure

1M Diastolic HF with
Arrhythmia Indications

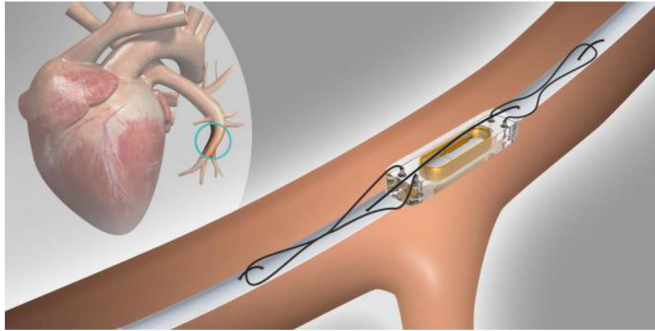
Phase I: Targeting a Sub-Group with a 510K device



ASK: \$8M Series A



VC Interests in Heart Failure Monitor



 ST. JUDE MEDICAL



 ENDOTRONIX



 VECTORIOUS

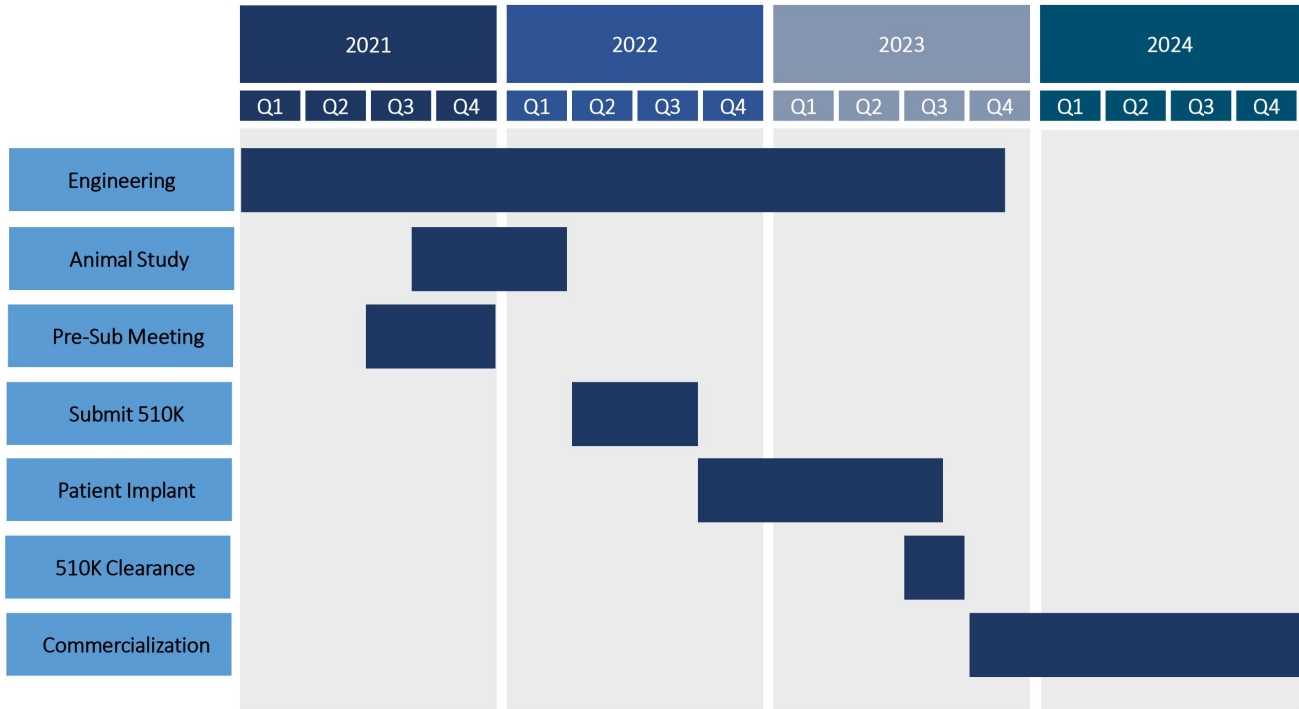
FIRE1



Attractive Acquisitions Target



510K Clinical Path



Reimbursement

Hospital Outpatient Payment¹¹

Effective Jan. 1, 2020–Dec. 31, 2020

Hospitals use CPT codes for outpatient services. The procedure codes below apply to services performed in the hospital outpatient setting.

Under Medicare's Ambulatory Payment Classification (APC) methodology for hospital outpatient payment, each CPT code is assigned to an ambulatory payment class. Each APC has a relative weight that is then converted to a flat payment amount.

CPT® Code ¹	CPT® Description	2020 APC ¹¹	APC Title ¹¹	Status Indicator ¹¹	Relative Weight ¹¹	2020 Medicare National Unadjusted Rate ¹¹
Subcutaneous Cardiac Rhythm Monitor Procedures (Includes Loop Recorders)						
33285	Insertion, subcutaneous cardiac rhythm monitor, including programming	5222	Level 2 Pacemaker and Similar Procedures	J1	94.59	\$7,642
33286	Removal, subcutaneous cardiac rhythm monitor	5071	Level 1 Excision/ Biopsy/ Incision and Drainage	Q2	7.55	\$610

CPT® Code ¹	CPT® Description	2020 APC ¹¹	APC Title ¹¹	Status Indicator ¹¹	Relative Weight ¹¹	2020 Medicare National Unadjusted Rate ¹¹
Subcutaneous Cardiac Rhythm Monitor Programming — In person						
93285	Programming device evaluation (in person) with iterative adjustment of the implantable device to test the function of the device and select optimal permanent programmed values with analysis, review, and report by a physician or other qualified healthcare professional; subcutaneous cardiac rhythm monitor system	5741	Level 1 Electronic Analysis of Devices	Q1	0.45	\$36

WHY NOW?

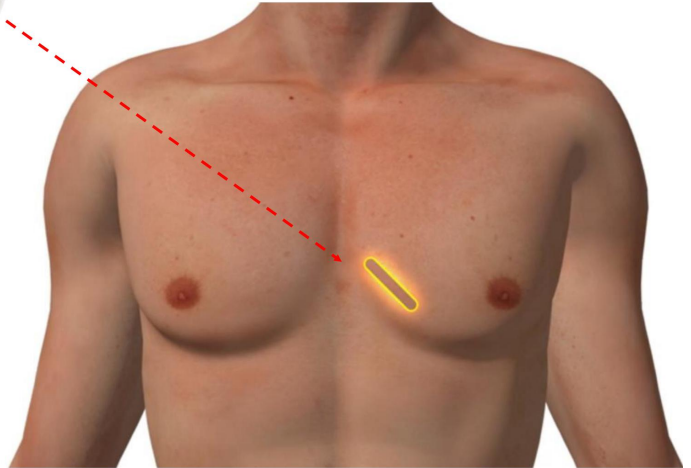
Because of lack of comprehensive long-term cardiac **DATA** that can impact patients and clinicians far beyond Heart Failure.

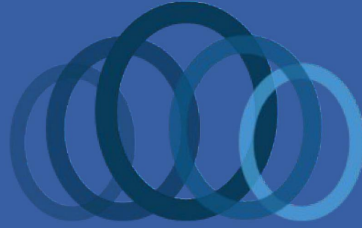


MISSION

Provide the most
comprehensive and
predictive long-term
cardiac data
for heart failure patients
to prevent unnecessary
hospitalizations and
improve patients quality
of life.

jaeb@oracle-health.com





ORACLE HEALTH

jaeb@oracle-health.com
